



Electro heating units

# Nevada



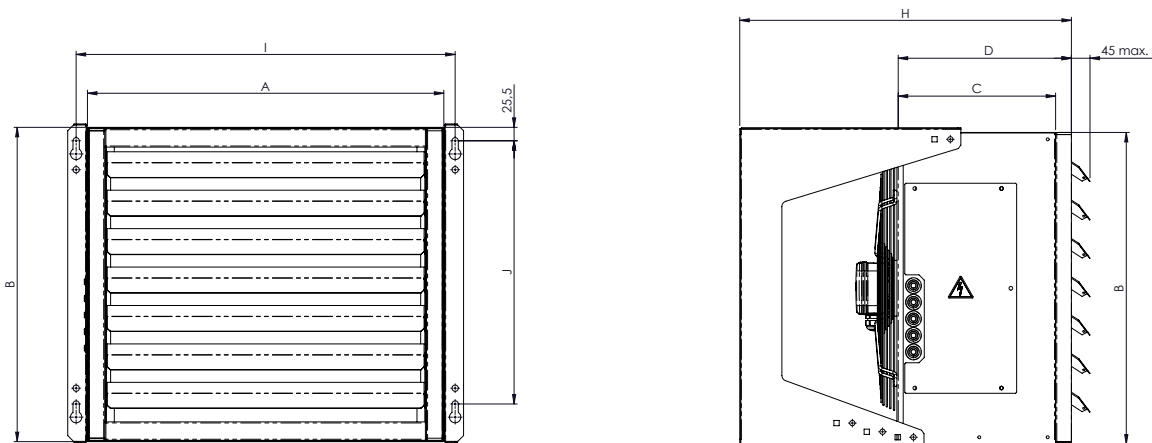
[www.stavoklima.eu](http://www.stavoklima.eu)



## Construction description

The heating unit Nevada is intended to heat up the air in sales, industrial and storage spaces. Offering two capacity types we can cover the need to heat up small as far as big objects. Capacity 4,5-20kW/400V.

- Self-contained light-weight construction of galvanized plate coated in RAL 9010.
- Wall mounting of the unit.
- Loose panel with a fan for easy maintenance or cleaning.
- High efficient maintenance-free fans, dynamically and statically balanced with inbuilt overload protection against overheating.
- Electronically regulated exchangers with heating bodies with inbuilt protection against overheating incl. breakdown electronic with connection possibility of a room or outlet thermostat.
- Positioning wall suspensions.
- Variable outlet blades.



### TECHNICAL DATA

DIMENSIONS	NEVADA 1-E	NEVADA 2-E
A [mm]	530	680
B [mm]	470	600
C [mm]	300	300
D [mm]	335	335
H [mm]	630	630
I [mm]	570	720
J [mm]	380	500

### TECHNICAL DATA

CAPACITIES	NEVADA									
	1E 4,5 kW	1E 6 kW	1E 7,5 kW	1E 9 kW	2E 10 kW	2E 12,5 kW	2E 15 kW	2E 17,5 kW	2E 20 kW	
Air volume max. [m <sup>3</sup> /h.]	2225	2225	2225	2225	3650	3650	3650	3650	3650	
Heating capacity of exchanger 400V [kW]	4,5	6	7,5	9	10	12,5	15	17,5	20	
Outlet temperature Ta [T1= 10°C] [°C]	16	18	20	22	18	20	22	24	26	
Electro exchanger connection [V]	400	400	400	400	400	400	400	400	400	
No. of exchanger sections	2	2	2	2	2	2	2	2	2	
Capacity composition	1,5/4,5 kW	3/6 kW	3/7,5	3/9 kW	5/10 kW	5/12,5 kW	7,5/15 kW	7,5/17,5 kW	7,5/20 kW	
Fan voltage [V]	230	230	230	230	230	230	230	230	230	
Fan power input [W]	165	165	165	165	260	260	260	260	260	
Fan power curret [A]	0,9	0,9	0,9	0,9	1,4	1,4	1,4	1,4	1,4	
Protection class	IP20	IP20	IP20	IP20	IP20	IP20	IP20	IP20	IP20	
Noise level max./mid./min. [dB(A)]*	54	54	54	54	58	58	58	58	58	
Weight [kg]	19	19	19	19	26	26	26	26	28	
Controller	Econ	Econ	Econ	Econ	Econ	Econ	Econ	Econ	Econ	

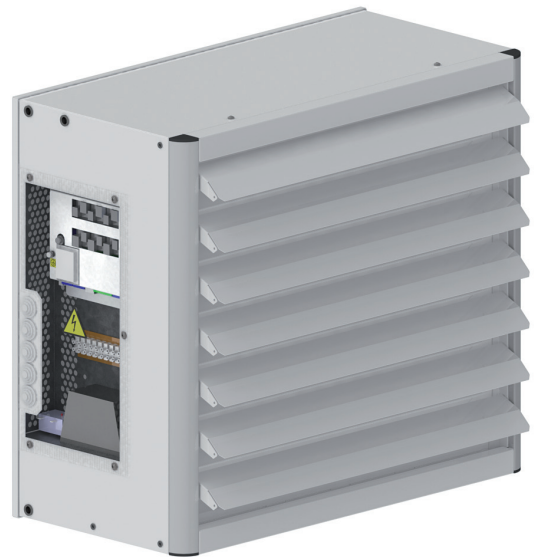
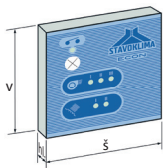
\* - acoustic data in the distance 5m from the unit

**Control: Econ**

Control description: Econ is intended for regulating of Nevada heater with possibility of connecting of external elements (door contact, room or outlet thermostat). There is a protective electronic plate against overheating as a part of the unit with automatic fan stop delay.

**Dimensions: w. 71 x h. 71 x d. 25**

The control is intended only for wall mounting. IP20



**Functions of Econ control:**

	Free potential door contact incl. adjustable time delay	standard		small control dimensions, wall mounting, ergonomic design	standard
	Connection Master/slave	not possible		room thermostat controlled via external remote control	standard

**Electro units - wiring**

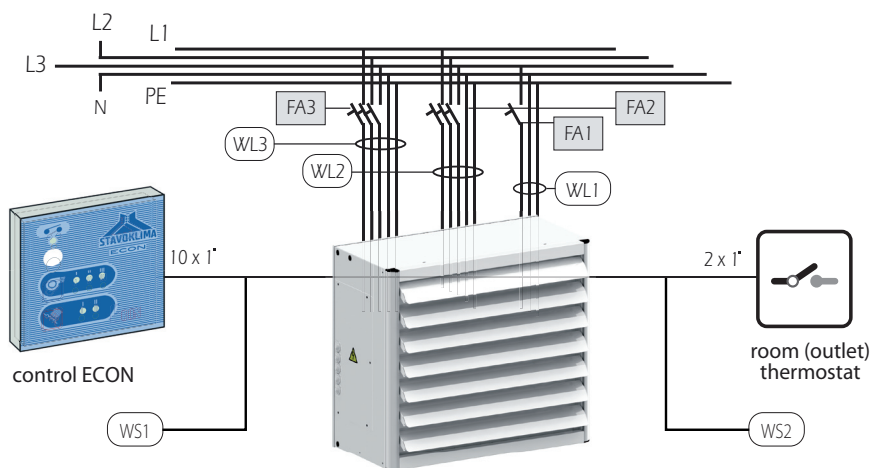


Table of cable and protection for electric units (EO)				
electro heater	cable (WL2)	circuit breaker (FA2)	cable (WL3)	circuit breaker (FA3)
4,5 kW	5C x 2,5	3x 10 A/B	5C x 2,5	3 x 10 A/B
6 kW	5C x 2,5	3x 10 A/B	5C x 2,5	3 x 10 A/B
7,5 kW	5C x 2,5	3x 10 A/B	5C x 2,5	3 x 10 A/B
9 kW	5C x 2,5	3x 10 A/B	5C x 2,5	3 x 10 A/B
10 kW	5C x 4	3 x 16 A/B	5C x 4	3 x 16 A/B

Table of cable and protection for electric units (EO)				
electro heater	cable (WL2)	circuit breaker (FA2)	cable (WL3)	circuit breaker (FA3)
12,5 kW	5C x 4	3x 16 A/B	5C x 4	3 x 16 A/B
15 kW	5C x 4	3x 16 A/B	5C x 4	3 x 16 A/B
17,5 kW	5C x 4	3x 16 A/B	5C x 6	3 x 25 A/B
20 kW	5C x 4	3x 16 A/B	5C x 6	3 x 25 A/B

Tablet of cables and protection					
FA1	1 x 10 A/C	WL1	3C x 1,5(2,5)	WS1	5 x 2 x 0,5
FA2	See tablet. EO	WL2	See tablet. EO	WS2	O2 x 1
FA3	See tablet. EO	WL3	See tablet. EO		

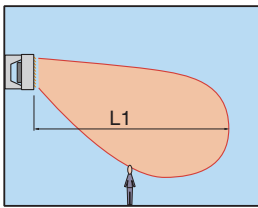
### Order key

Nevada - 1 - E6

1; 2  
 „1” - capacity type 1  
 „2” - capacity type 2

E 4,5	/ 400 V	- Electro exchanger 400V	- 4,5 kW;	Nevada 1
E 6,0	/ 400 V	- Electro exchanger 400V	- 6,0 kW;	Nevada 1
E 7,5	/ 400 V	- Electro exchanger 400V	- 7,5 kW;	Nevada 1
E 9,0	/ 400 V	- Electro exchanger 400V	- 9,0 kW;	Nevada 1
E 10,0	/ 400 V	- Electro exchanger 400V	- 10,0 kW;	Nevada 2
E 12,5	/ 400 V	- Electro exchanger 400V	- 12,5 kW;	Nevada 2
E 15,0	/ 400 V	- Electro exchanger 400V	- 15,0 kW;	Nevada 2
E 17,5	/ 400 V	- Electro exchanger 400V	- 17,5 kW;	Nevada 2
E 20,0	/ 400 V	- Electro exchanger 400V	- 20,0 kW;	Nevada 2

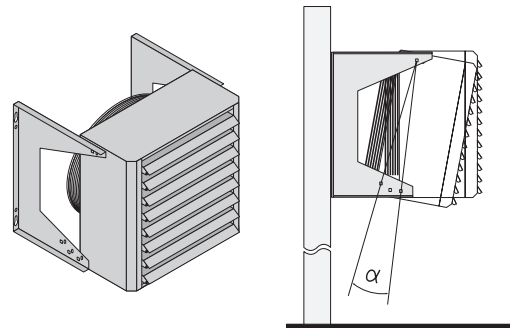
### Air stream coverage



TYP	1E 4,5 KW	1E 6 KW	1E 7,5KW	1E 9 KW	2E 10 KW	2E 12,5 KW	2E 15 KW	2E 17,5 KW	2E 20 KW
L1 [m]	18	17	16,5	16	22	21	20	19	18

\*T1=10°C - isothermal coverage

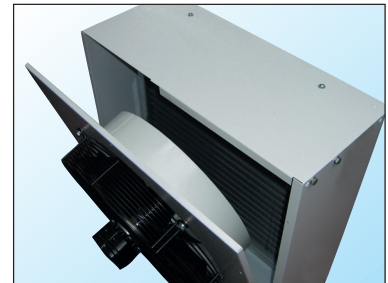
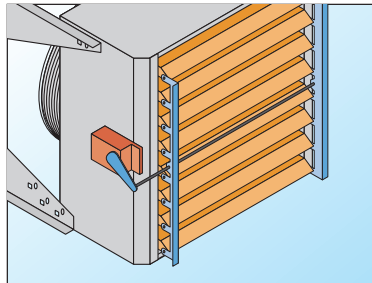
### Positioning wall suspensions



- High efficient fans with inbuilt thermocontact against overload. Standard possibility of speed regulation by voltage regulator.

- Moveable blades for effective usage of the unit capacity according to the placement and position of the installation, electromotive blades on request.
- Units Nevada with accessories can be used also as an air curtain.

- Electro exchangers are equipped with electronic protection against overheating in standard. Cleaning and revision of the electro exchanger can be made after taking off the back fan plate.



Representative: