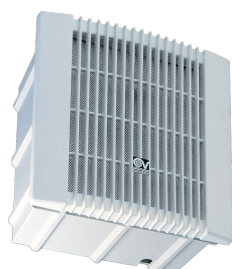


Technical Data Sheet

CODE 11972

VORT PRESS 140 LL I T

Centrifugal duct fans



Certifications

CE CE

EAC EAC

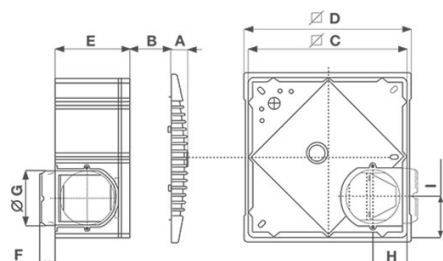
UKCA UKCA

CB TEST CERTIFICATE

TECHNICAL AND PERFORMANCE DATA

Frequency (Hz)	50	Max delivery of side outlet at max speed (l/s)	38,9
Insulation class	II°	Max delivery of side outlet at max speed (m³/h)	140
IP	X4	Max delivery of side outlet at min speed (l/s)	18,6
Max absorbed current (A)	0,1	Max delivery of side outlet at min speed (m³/h)	67
Max absorbed current at Max speed (A)	0,1	Max pressure at Max speed (mmH2O)	22
Max absorbed current at Min speed (A)	0,05	Max pressure at Max speed (Pa)	216
Max absorbed power (W)	22	Max pressure at side outlet - max speed (mmH2O)	22
Max absorbed power at Max speed (W)	27	Max pressure at side outlet - min speed (mmH2O)	8
Max ambient temperature for continuous operation (°C)	40	Max pressure at side outlet - min speed (Pa)	78
Nominal diameter (mm)	100	Max pressure at side outlet (Pa)	216
Ø Discharge hole (mm)	97	Max RPM	1130
Power absorbed at 1st speed (W)	16	Min RPM	594
Voltage (V)	220-240	Pressure at 1st speed (mmH2O)	8
Weight (Kg)	2,9	Pressure at 1st speed (Pa)	78
Airflow at 1st speed (l/s)	15,3	RPM side air outlet - max speed	829
Airflow at 1st speed (m³/h)	55	RPM side air outlet - min speed	450
Max airflow at Max speed (l/s)	32,8	Sound pressure at 3 m - min speed Lp [dB (A)] 3m - min speed	30
Max airflow at Max speed (m³/h)	118	Sound pressure at 3m at Max speed Lp [dB (A)]	38

DIMENSIONS



Size A (mm)	28
Size B (mm)	65
Size C (mm)	284
Size D (mm)	300
Size E (mm)	133
Size F (mm)	28,5
Size G (mm)	Ø 97
Size H (mm)	62
Size I (mm)	71,5

PER INFORMAZIONI / FOR INFORMATION

ITALY

Pre Sales:
prevendita@vortice-italy.com
 After Sales:
postvendita@vortice-italy.com

UNITED KINGDOM & REP. OF

IRELAND
 Sales Dept:
sales@vortice.ltd.uk
 Technical Dept:
technical@vortice.ltd.uk

OTHER COUNTRIES

Sales Dept:
export@vortice-italy.com
 After Sales:
after-sales@vortice-italy.com

Technical Data Sheet

CODE 11972

VORT PRESS 140 LL I T

Centrifugal duct fans



DESCRIPTION

- Material: UV resistant plastic (prevents ageing caused by exposure to sunlight).
- Nominal diameter 100 mm
- 2 speed motor with thermal overload protection and shaft turning in ball bearings.
- Minimum air flow, rear outlet: 55 m³/h
- Maximum air flow, rear outlet: 118 m³/h
- Minimum air flow, side outlet: 67 m³/h
- Maximum air flow, side outlet: 140 m³/h
- Equipped with "smart" timer: when lights are switched on, the fan will start up after 40" approx; when lights are switched off, the fan stays on for between 30" and 30' (adjustable), running at minimum speed.
- Double motor-fan enclosure, antivibration mounts and non-return damper combining to ensure extremely quiet operation.
- Supplied with front grille mounting springs, suitable for any kind of false ceiling (65 mm max).
- Removable and washable metal mesh filter.
- Outlet port equipped with non-return damper.
- Vortice speed controller.

ACCESSORIES



**VP-C (KIT
STAFFE VORT
PRESS
140I/140IT)**
Code 22815

PER INFORMAZIONI / FOR INFORMATION

ITALY

Pre Sales:
prevendita@vortice-italy.com
After Sales:
postvendita@vortice-italy.com

OTHER COUNTRIES

Sales Dept:
export@vortice-italy.com
After Sales:
after-sales@vortice-italy.com

UNITED KINGDOM & REP. OF

IRELAND

Sales Dept:
sales@vortice.ltd.uk
Technical Dept:
technical@vortice.ltd.uk