

# Technical Data Sheet

CODE 42263

## MPC-E 254 M

Medium-pressure long cased axial fans



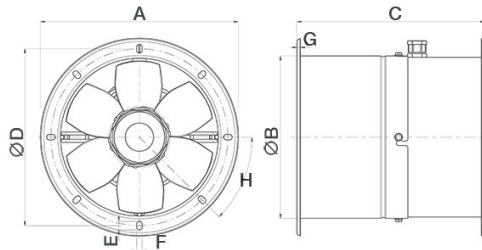
### Certifications



### TECHNICAL AND PERFORMANCE DATA

Frequency (Hz)	50	Number of poles	4
Insulation class	I°	Voltage (V)	230
IP	X4	Weight (Kg)	8,2
Max absorbed current (A)	0,32	Max airflow (l/s)	328
Max absorbed power (W)	70	Max airflow (m³/h)	1180
Max ambient temperature for continuous operation (°C)	70	Max pressure (mmH2O)	9,0
Min continuous operation room temperature (°C)	-25	Max pressure (Pa)	82
Motor ATEX marking	55	RPM	1460
Nominal diameter (mm)	250	Sound power Lw [dB(A)]	45,8
Number of phases (Ph)	1	Sound pressure Lp [dB (A)] at 3 m	25,3

### DIMENSIONS



Size A (mm)	∅ 319
Size B (mm)	∅ 264
Size C (mm)	300
Size D (mm)	∅ 292
Size E (mm)	14
Size F (mm)	9
Size G (mm)	4
Size H (mm)	45°

### PER INFORMAZIONI / FOR INFORMATION

#### ITALY

Pre Sales:  
prevendita@vortice-italy.com  
After Sales:  
postvendita@vortice-italy.com

#### UNITED KINGDOM & REP. OF

IRELAND  
Sales Dept:  
sales@vortice.ltd.uk  
Technical Dept:  
technical@vortice.ltd.uk

#### OTHER COUNTRIES

Sales Dept:  
export@vortice-italy.com  
After Sales:  
after-sales@vortice-italy.com

# Technical Data Sheet

CODE 42263

## MPC-E 254 M

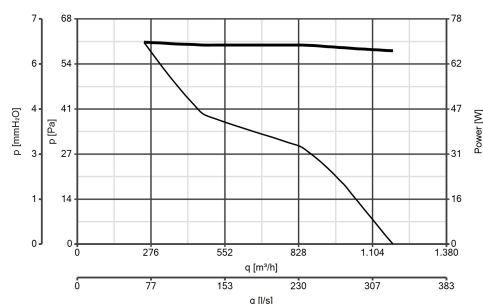
Medium-pressure long cased axial fans



### DESCRIPTION

- Nominal diameter 250 mm
- 2 rolled steel flange sections, welded, phosphated and polyester powder coated in practical grey colour with hammered effect finish, guaranteeing long-term resistance to atmospheric agents.
- 1 speed single phase AC motor with shaft turning in double shielded ball bearings, insulation class F.
- Maximum air flow: 1,180 m<sup>3</sup>/h.
- Impeller with 6 wing profile blades, dynamically balanced (UNI ISO 1940 – Balancing class 6.3), optimized to deliver maximum performance and low noise levels, moulded from filled polypropylene for superior dimensional stability and resistance to atmospheric agents, and keyed to a diecast aluminium hub.
- Vortice speed controller.

### CURVES



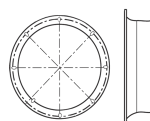
### ACCESSORIES



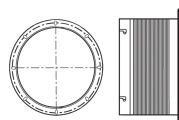
**IRM 30**  
Code 12921



**IREM 3 CD**  
**99250080**  
Code 12931



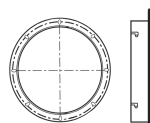
**MPC BO 250**  
**(BOCCAGLIO)**  
Code 22535



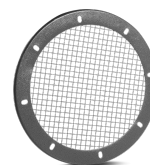
**MPC RA 250**  
**(RACCORDO**  
**FLESSIBILE)**  
Code 22516



**MPC SU 250**  
**(SUPPORTO)**  
Code 22531



**MPC FL 250**  
**(FLANGIA)**  
Code 22523



**MPC RP 250**  
**(RETE DI**  
**PROTEZIONE)**  
Code 22527

### PER INFORMAZIONI / FOR INFORMATION

ITALY  
Pre Sales:  
prevendita@vortice-italy.com  
After Sales:  
postvendita@vortice-italy.com

UNITED KINGDOM & REP. OF  
IRELAND  
Sales Dept:  
sales@vortice.ltd.uk  
Technical Dept:  
technical@vortice.ltd.uk

OTHER COUNTRIES  
Sales Dept:  
export@vortice-italy.com  
After Sales:  
after-sales@vortice-italy.com