

# KVRI 6035 EC 30

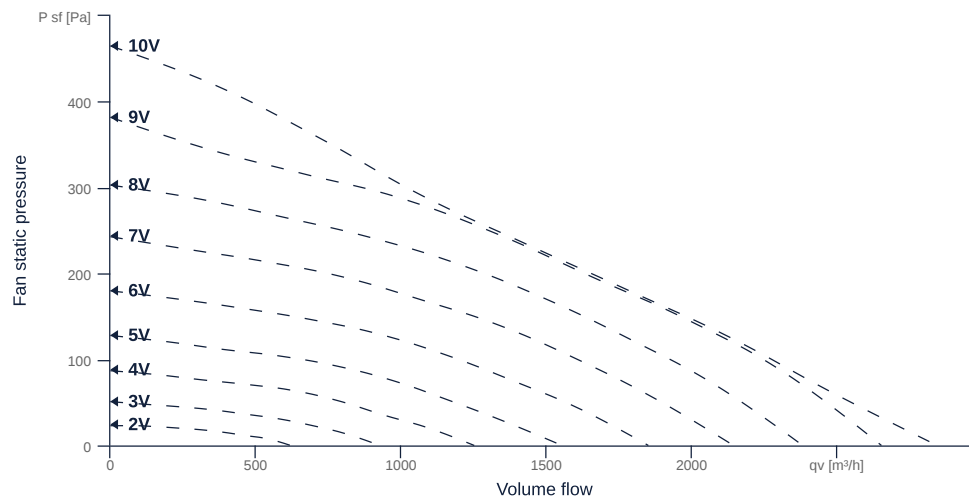
131437

- Backward curved radial impeller
- Swing out fan unit
- Galvanized sheet steel housing, double-walled, 25 mm mineral wool
- High efficiency EC motor, steplessly controllable
- Conveyed medium temperature up to 60 °C in continuous operation



## MAP

Name	Value	Unit
Volume flow	0	m <sup>3</sup> /h
Pressure	0	Pa



zur Produktseite

## GENERAL DATA

Name	Value	Unit	Formula symbol
ERP conformity	Yes		
Certifications	CE, UKCA		
Duct size	600x350		WxH <sub>duct</sub>
Pipe connection size (DN)	-		DN
Rated voltage (entire device)	230	V	U <sub>rated</sub>
Phases (entire device)	1~		phase
Electrical protection (entire device)	6 A		fuse
Housing material	Galvanized steel		mat <sub>casing</sub>
Impeller material	Plastic		mat <sub>impeller</sub>
IP-protection class (entire device)	IPX4		IP <sub>compl</sub>
IP-Protection class (terminal box)	IP44		IP <sub>ebox</sub>
Weight	34.4	kg	m
Nominal air flow rate, nominal point m <sup>3</sup> /h	1155.6	m <sup>3</sup> /h	q <sub>v,nom</sub>
Nominal external pressure, static	161.3	Pa	p <sub>s,nom</sub>
Fan type	Radial		Fan <sub>type</sub>
Category / Installation situation	A		cat

## ERP DATA (LOT 6)

Name	Value	Unit	Formula symbol
Nominal air flow rate, nominal point m <sup>3</sup> /s	0.32	m <sup>3</sup> /s	q <sub>v,nom</sub>
Actual electrical input power, nominal point	0.09	kW	P <sub>e,nom</sub>
Face velocity, nominal point	1.5	m/s	v <sub>nom</sub>
Nominal external pressure, static	161.3	Pa	p <sub>s,nom</sub>
supply air fan static efficiency, nominal point	63.4	%	η <sub>es,SUP</sub>
Enclosure sound level, nominal point	60	dB(A)	L <sub>WA2</sub>
Rating	Product is compliant 2018		

# KVRI 6035 EC 30

131437

ruck

## MAXIMAL DATA

Name	Value		Unit	Formula symbol
	50 Hz	60 Hz		
Max. power consumption (device)	164	164	W	$P_{ed, max}$
Max. operating current (device)	1.37	1.37	A	$I_{ed, max}$
Max. speed	1540	1540	1/min	$n_{max}$
Max. stat. efficiency	53.9	53.9	%	$\eta_{es}$
Max. fan efficiency	54.7	54.7	%	$\eta_e$
Max. flowrate	2845	2845	m <sup>3</sup> /h	$Q_{v, max}$
Max. stat pressure	465	465	Pa	$p_{st, max}$
Max. medium temperature	60	60	°C	$T_{m, max}$
Max. environment temperature	60	60	°C	$T_{amb, max}$
Min. environment temperature	-25	-25	°C	$T_{amb, min}$

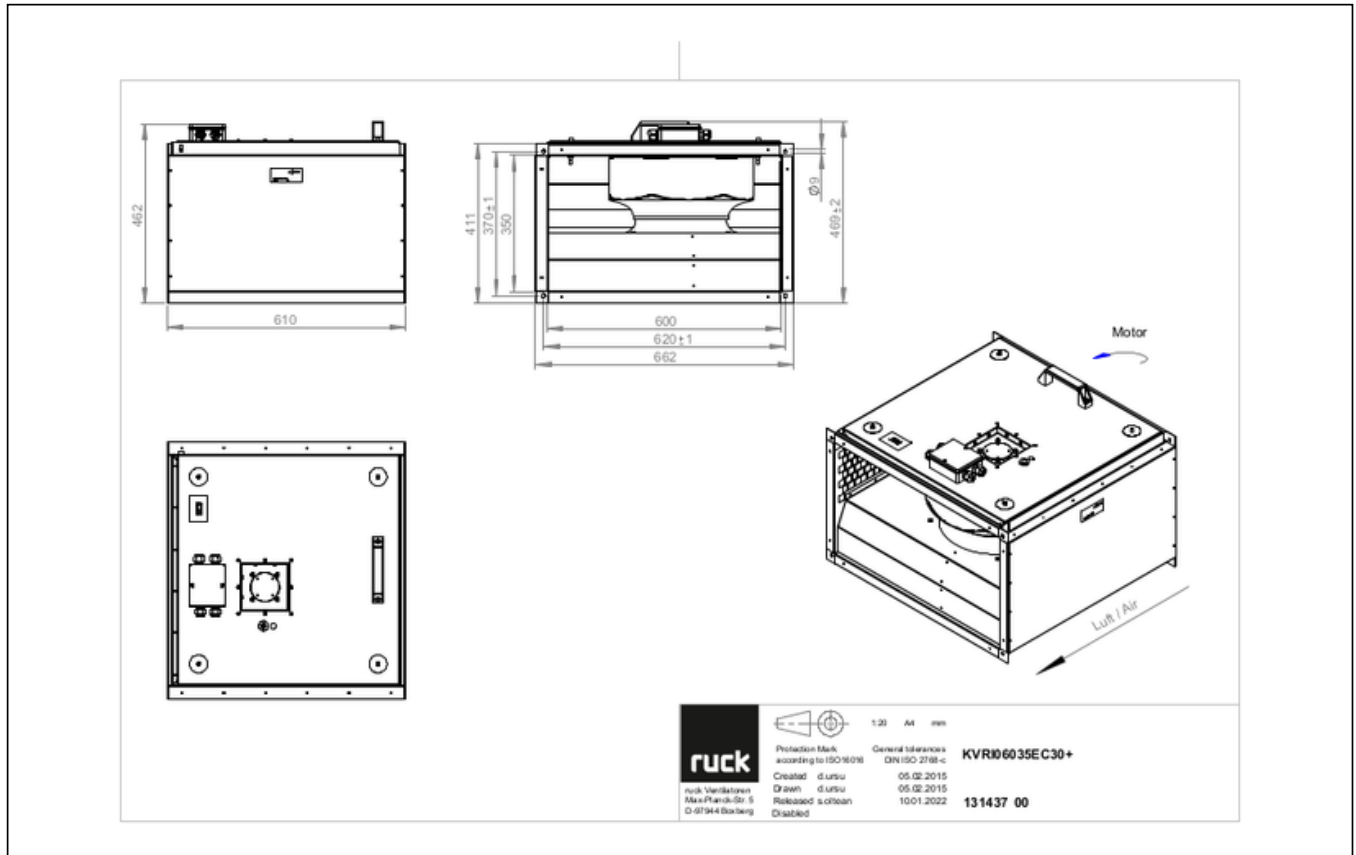


zur Produktseite

# KVRI 6035 EC 30

131437

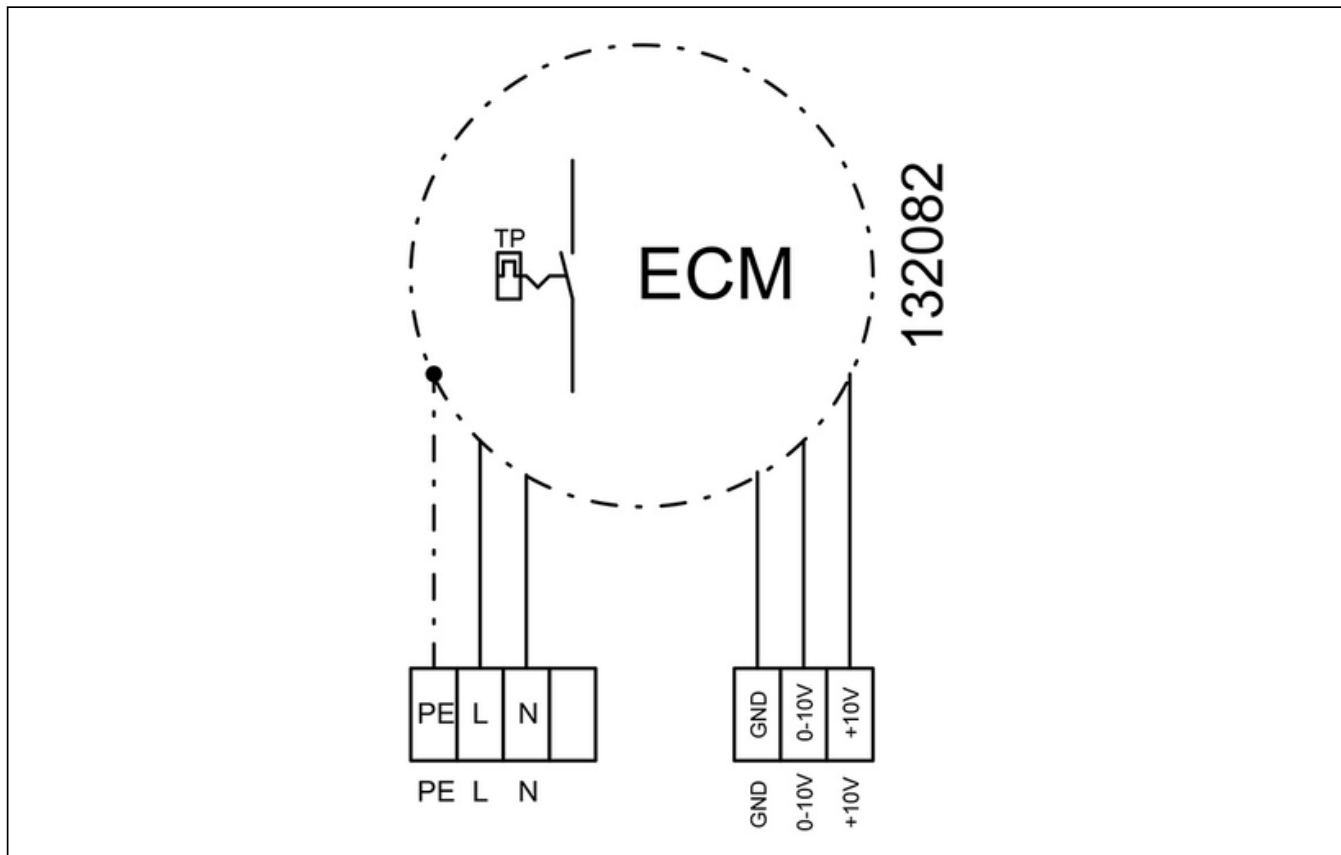
## SCHALTPLÄNE / MASSZEICHNUNGEN



zur Produktseite

# KVRI 6035 EC 30

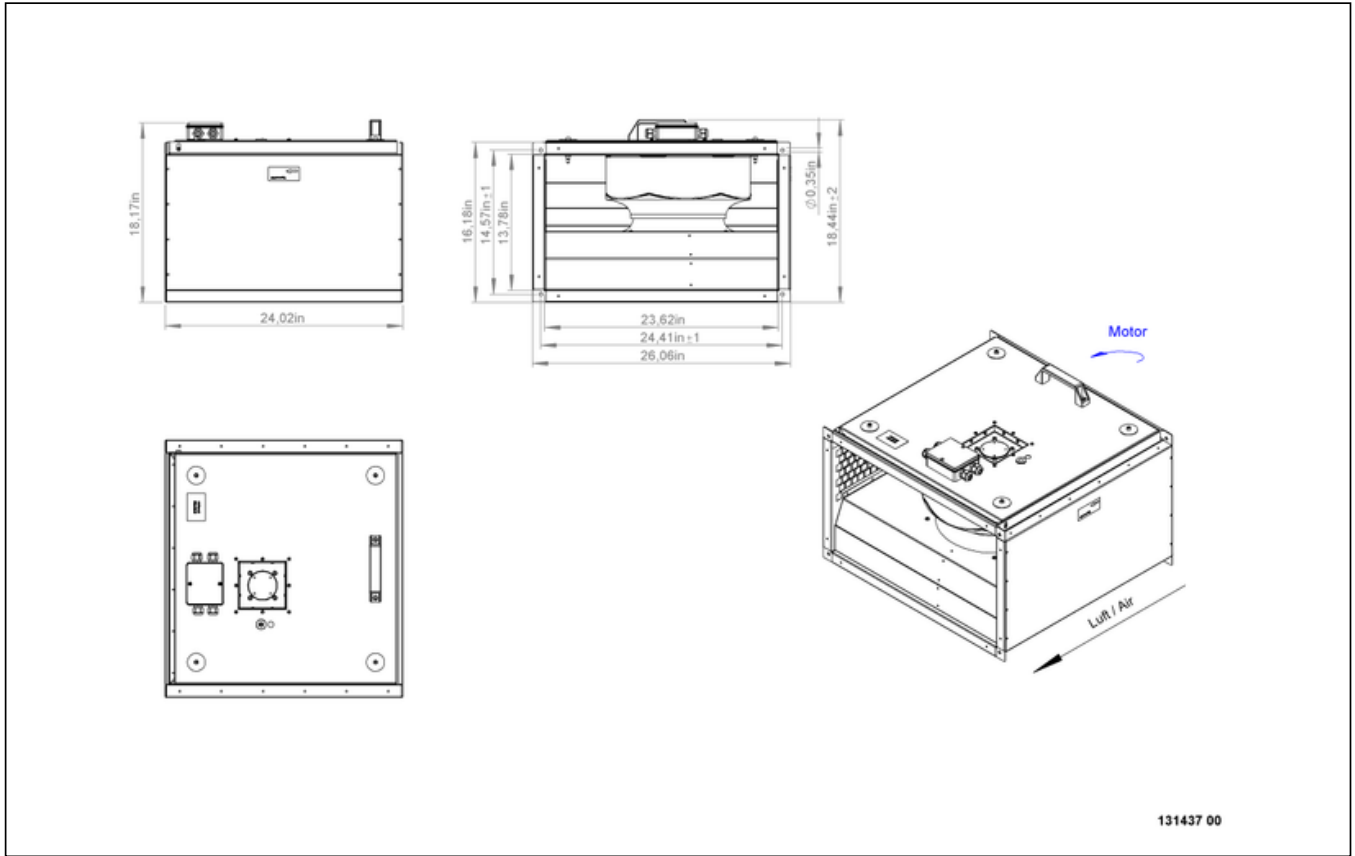
131437



zur Produktseite

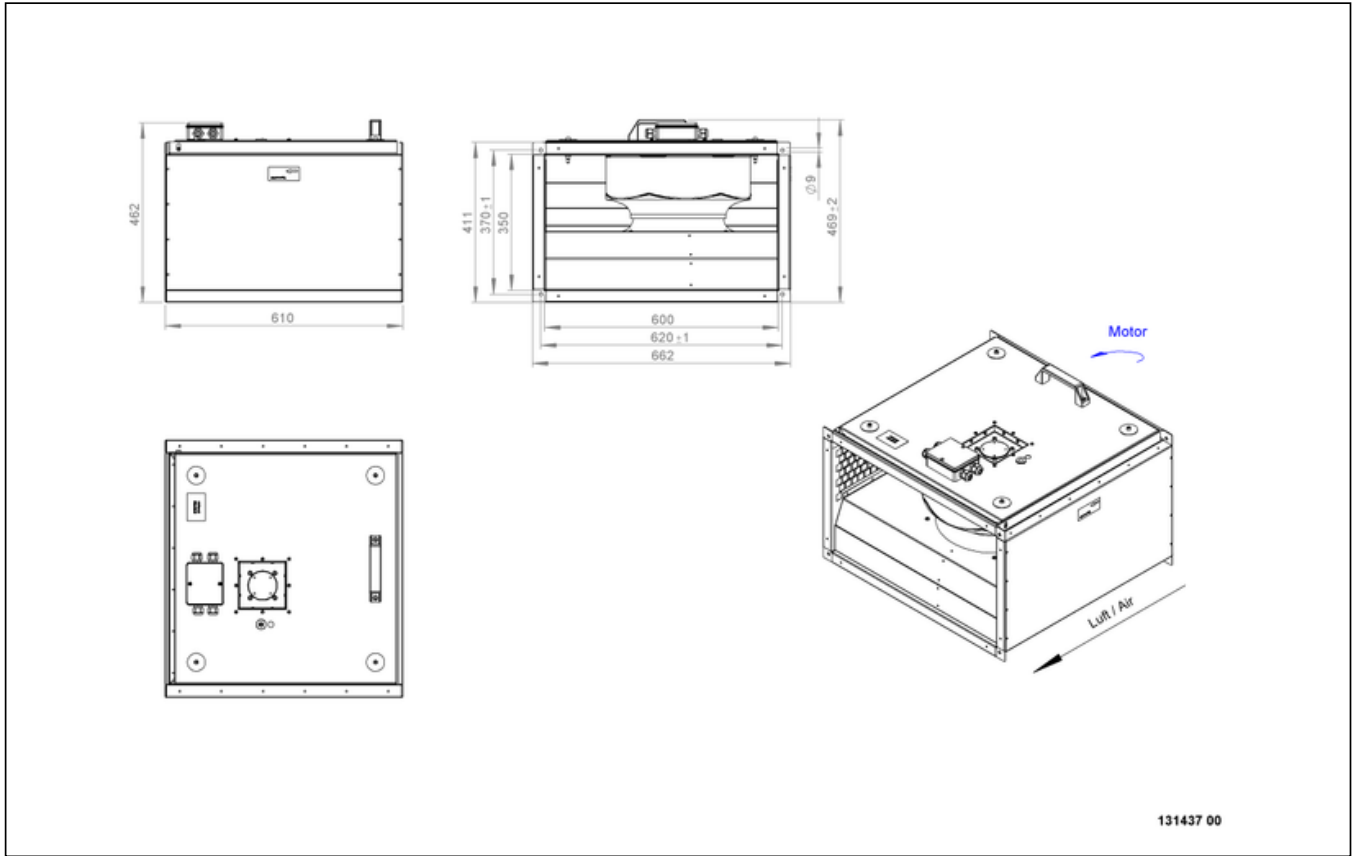
# KVRI 6035 EC 30

131437



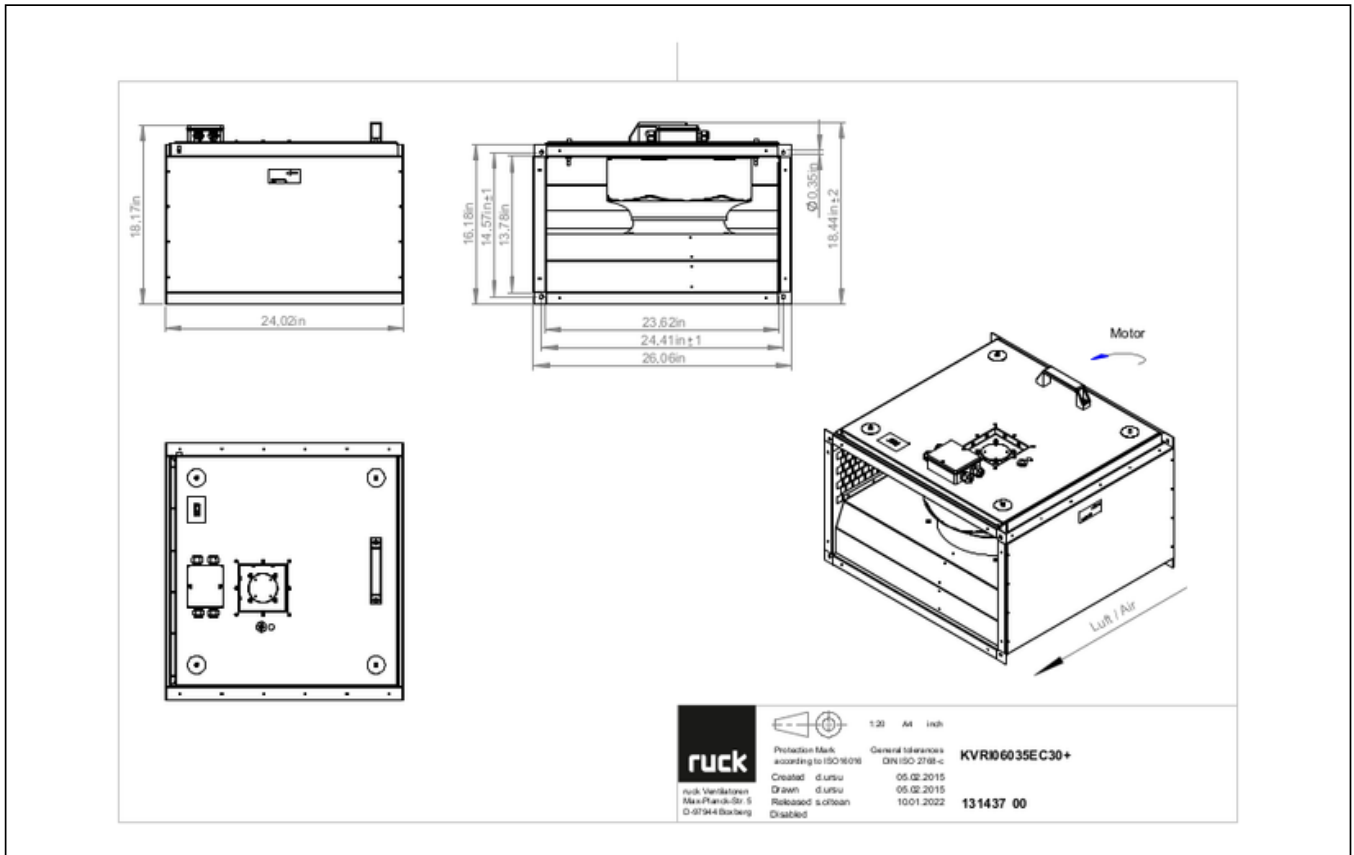
# KVRI 6035 EC 30

131437



# KVRI 6035 EC 30

131437



## MECHANICAL ACCESSORIES

### VS 6035 | 102808



- Duct connector, flexible
- Standard profile flange P20
- Galvanized steel sheet, plastic band (PVC)
- Temperature resistant up to 70 °C

### VKK 6035 | 103892



- Automatic shutter
- Plastic, weather resistant
- Temperature resistant up to 70 °C





# KVRI 6035 EC 30

131437

## ELECTRICAL ACCESSORIES

**GS 03 | 107633**



- Device switch
- $U_{max} = 400\text{ V}$ ,  $I_{max} = 25\text{ A}$
- Switching capacity  $400\text{ V } 3\text{-} = 5,5\text{ kW}$
- Protection class IP 55

**CON P1000 | 115259**



- Constant pressure control
- Actual value display possible via optional control unit
- Output 0-10 V DC + FC enable + setpoint reached
- Pressure setting by means of decade switch

**MTP 20 | 128146**



- Potentiometer 10 k $\Omega$
- Switching contact 1A/250V AC - 2,5A/12V DC
- Max. ambient temperature 50 °C
- VDE

**MTP 30 | 143289**



- Stepped potentiometer 10 k $\Omega$
- Step 1 + 2 settable 10 % - 100 % Vdc
- Step 3 100 % Vdc
- Supply voltage +10 Vdc

**MTP 40 | 147359**



- Potentiometer 10 k $\Omega$
- Connection in terminal box
- Max. ambient temperature 50 °C
- PU: 20 pieces

**MTP 50 | 153133**



- Potentiometer with multifunction output
- 230 VAC  $\pm 10\%$  / 50-60 Hz
- Selectable output: 1-10 VDC / 2-20 mA / 10-100 % PWM
- Min. and max. output value adjustable



zur Produktseite