

KVR 8050 EC 30

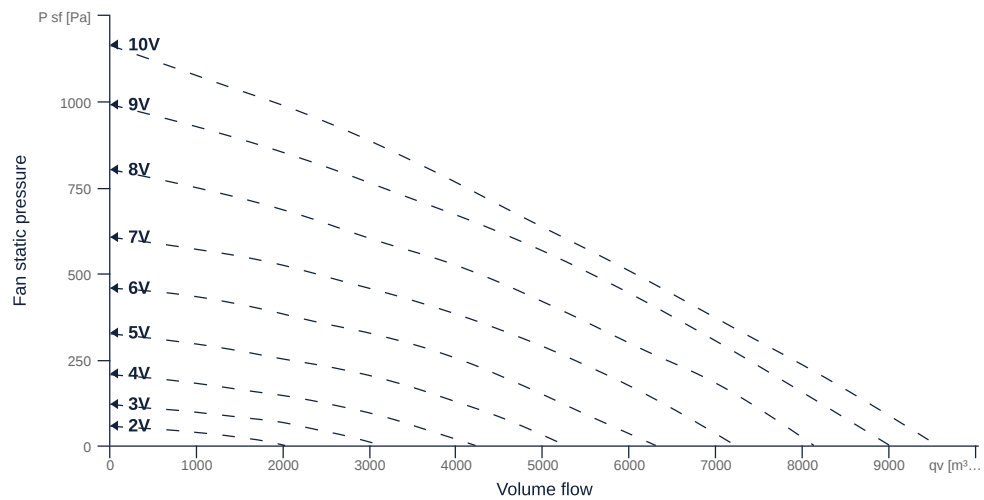
131370

- Backward curved radial impeller
- Removable fan unit
- Housing made of galvanized sheet steel
- High efficiency EC motor, steplessly controllable
- Conveyed medium temperature up to 50 °C in continuous operation



MAP

Name	Value	Unit
Volume flow	0	m³/h
Pressure	0	Pa



zur Produktseite

KVR 8050 EC 30

131370

ruck

GENERAL DATA

Name	Value	Unit	Formula symbol
ERP conformity	Yes		
Certifications	CE, UKCA		
Duct size	800x500		WxH _{duct}
Pipe connection size (DN)	-		DN
Rated voltage (entire device)	400	V	U _{rated}
Phases (entire device)	3~		phase
Electrical protection (entire device)	6 A		fuse
Housing material	Galvanized steel		mat _{casing}
Impeller material	Plastic		mat _{impeller}
IP-protection class (entire device)	IPX4		IP _{compl}
IP-Protection class (terminal box)	IP44		IP _{ebox}
Weight	58.05	kg	m
Nominal air flow rate, nominal point m ³ /h	4302	m ³ /h	q _{v,nom}
Nominal external pressure, static	494	Pa	p _{s,nom}
Fan type	Radial		Fan _{type}
Category / Installation situation	A		cat

ERP DATA (LOT 6)

Name	Value	Unit	Formula symbol
Nominal air flow rate, nominal point m ³ /s	1.2	m ³ /s	q _{v,nom}
Actual electrical input power, nominal point	0.88	kW	P _{e,nom}
Face velocity, nominal point	3	m/s	v _{nom}
Nominal external pressure, static	494	Pa	p _{s,nom}
supply air fan static efficiency, nominal point	65.6	%	η _{es,SUP}
Highest external air leakage rate	0.04	%	
Enclosure sound level, nominal point	76	dB(A)	L _{WA2}
Rating	Product is compliant 2018		

zur Produktseite



KVR 8050 EC 30

131370

ruck

MAXIMAL DATA

Name	Value		Unit	Formula symbol
	50 Hz	60 Hz		
Max. power consumption (device)	1328	1328	W	$P_{ed, max}$
Max. operating current (device)	2.05	2.05	A	$I_{ed, max}$
Max. speed	1600	1600	1/min	n_{max}
Max. stat. efficiency	62.5	62.5	%	η_{es}
Max. fan efficiency	63.2	63.2	%	η_e
Max. flowrate	9550	9550	m ³ /h	$Q_{v, max}$
Max. stat pressure	1160	1160	Pa	$p_{st, max}$
Max. medium temperature	50	50	°C	$T_{m, max}$
Max. environment temperature	50	50	°C	$T_{amb, max}$
Min. environment temperature	-25	-25	°C	$T_{amb, min}$

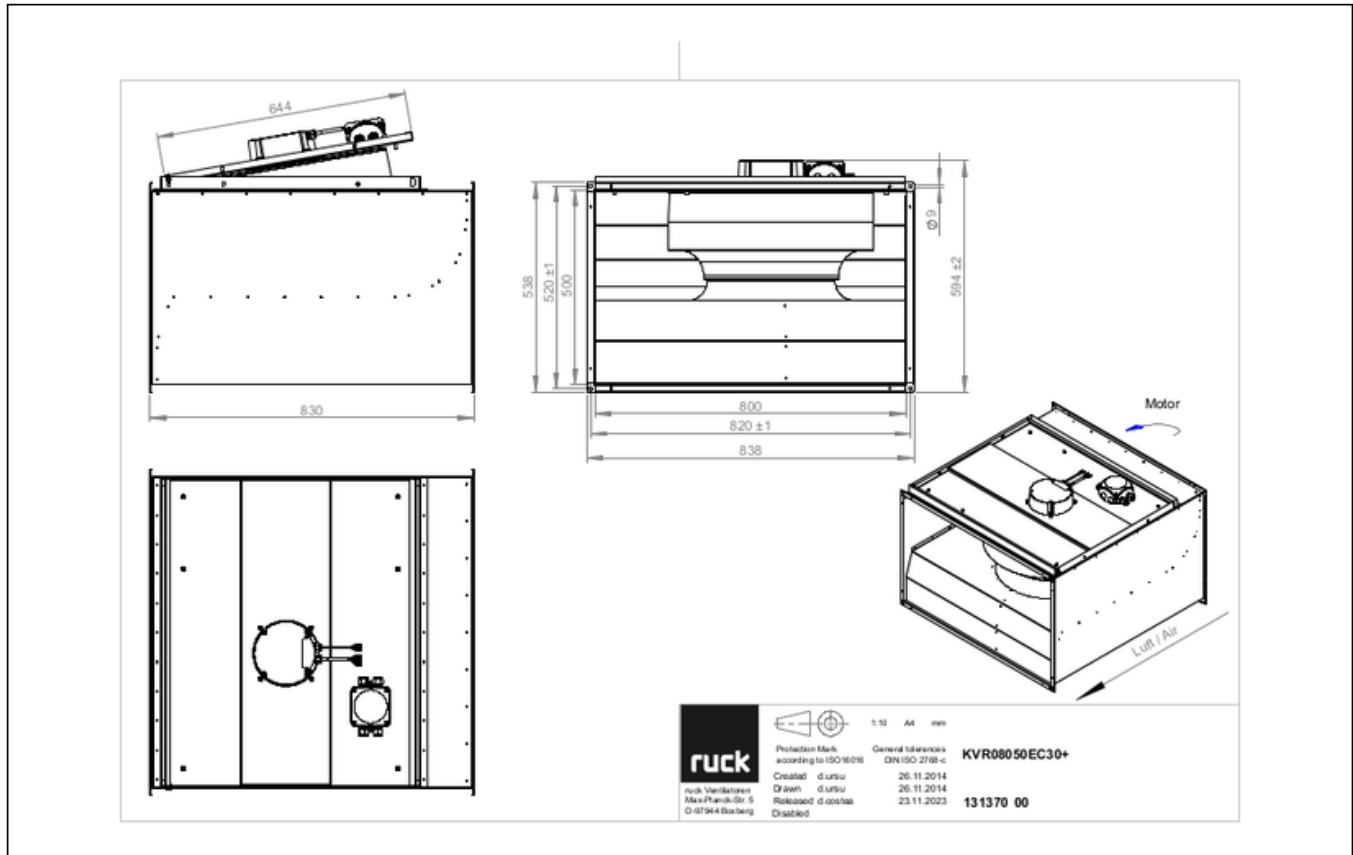


zur Produktseite

KVR 8050 EC 30

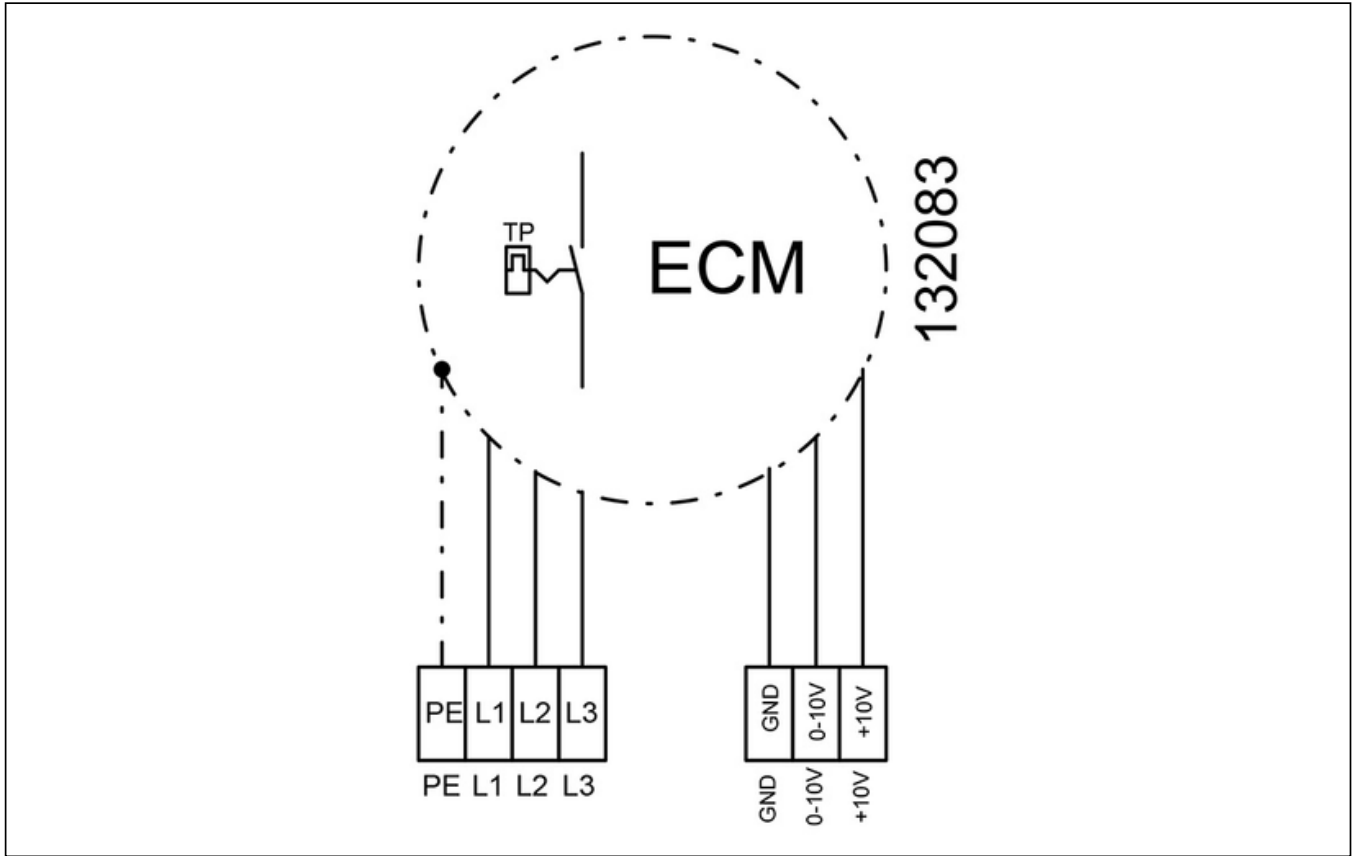
131370

SCHALTPLÄNE / MASSZEICHNUNGEN



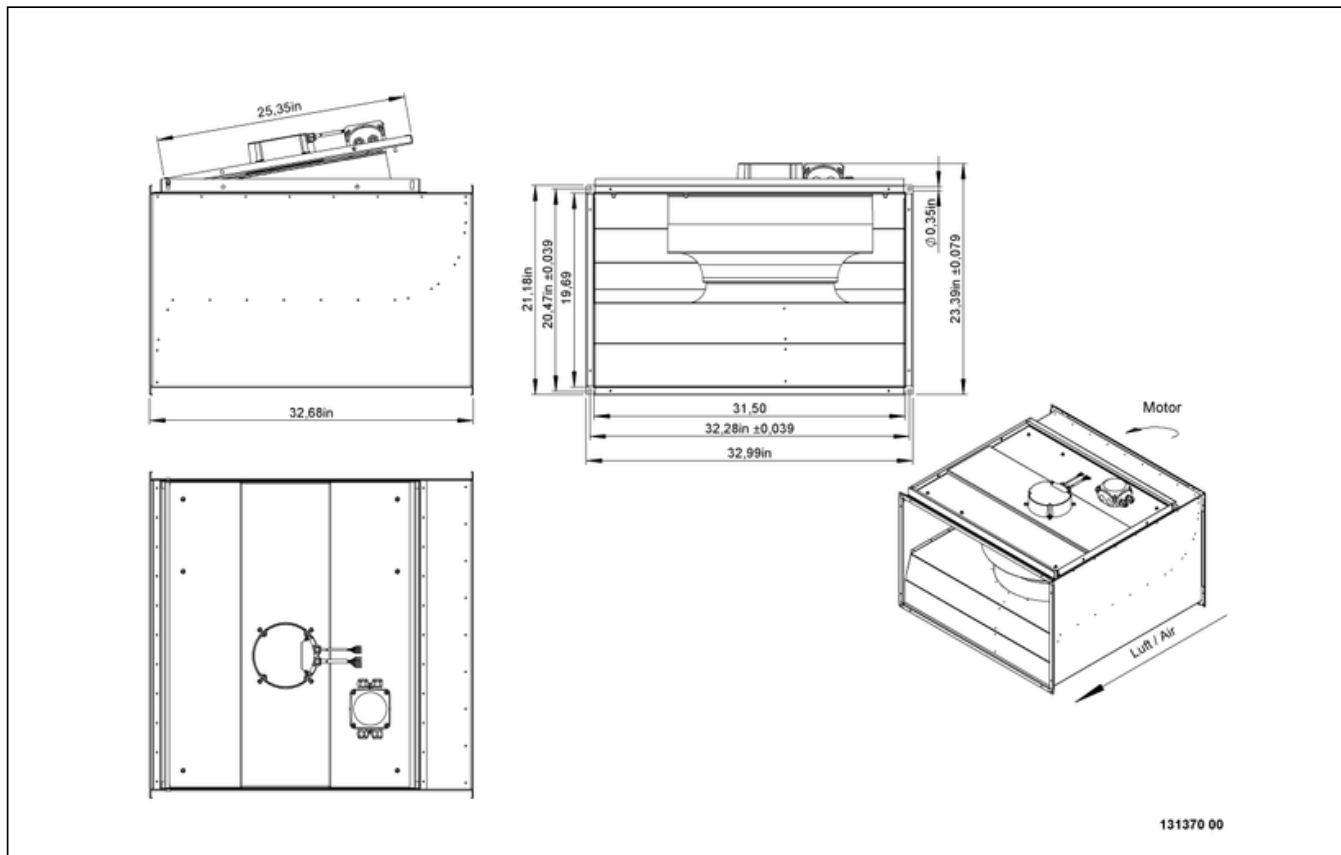
KVR 8050 EC 30

131370



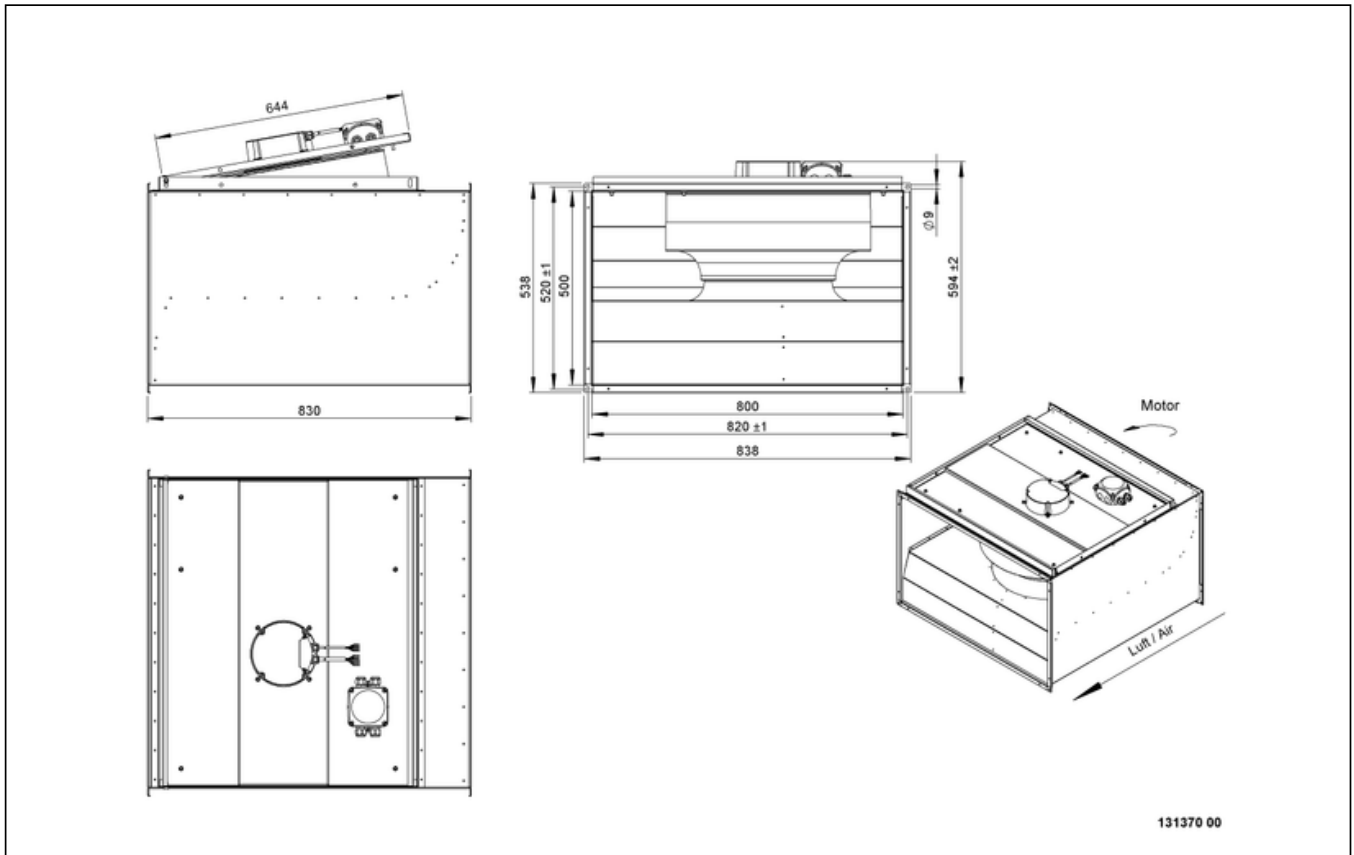
KVR 8050 EC 30

131370



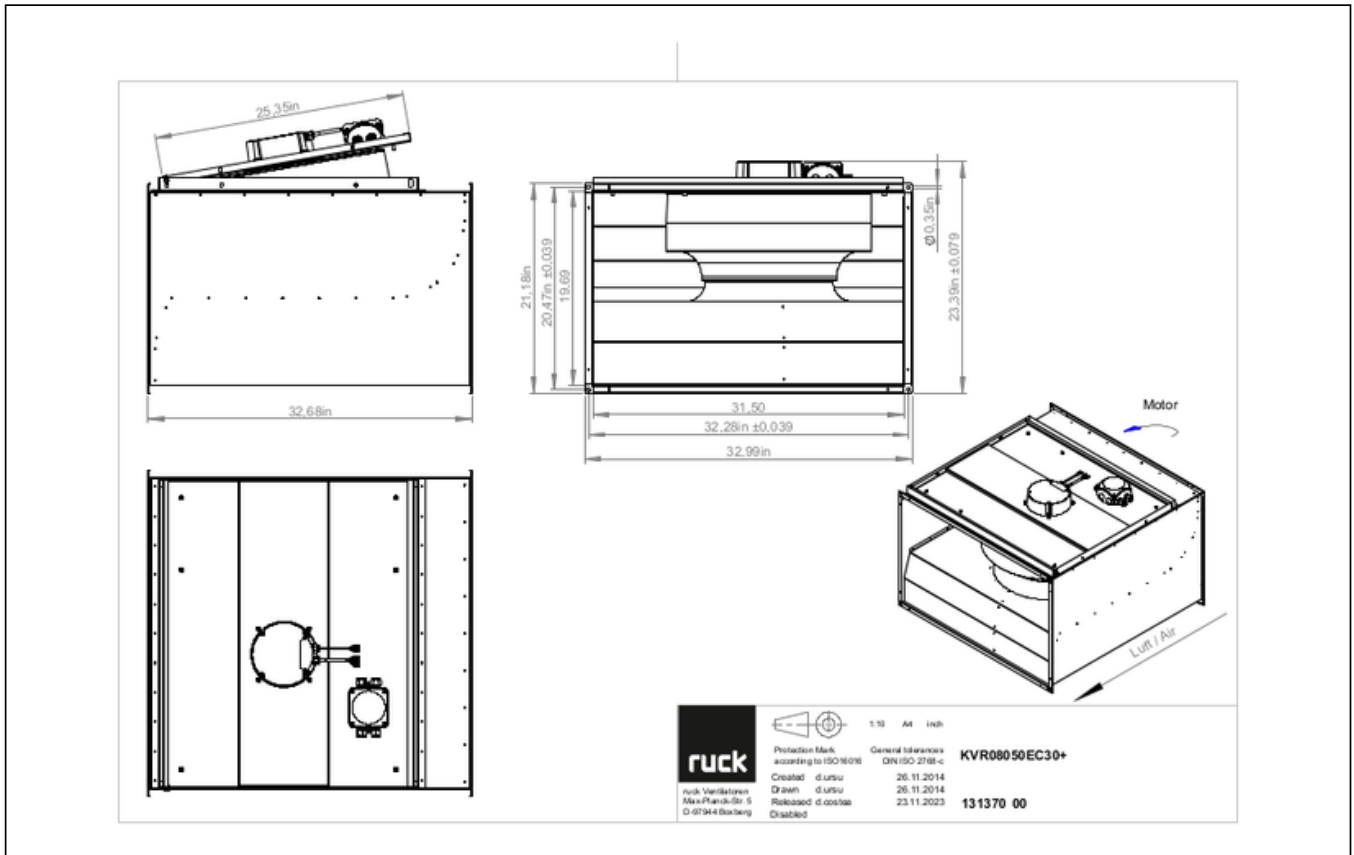
KVR 8050 EC 30

131370



KVR 8050 EC 30

131370



MECHANICAL ACCESSORIES

VKK 8050 | 103945



- Automatic shutter
- Plastic, weather resistant
- Temperature resistant up to 70 °C

VS 8050 | 103953



- Duct connector, flexible
- Standard profile flange P20
- Galvanized steel sheet, plastic band (PVC)
- Temperature resistant up to 70 °C



zur Produktseite

KVR 8050 EC 30

131370

ELECTRICAL ACCESSORIES

GS 03 | 107633



- Device switch
- $U_{max} = 400\text{ V}$, $I_{max} = 25\text{ A}$
- Switching capacity $400\text{ V } 3\text{-} = 5,5\text{ kW}$
- Protection class IP 55

CON P1000 | 115259



- Constant pressure control
- Actual value display possible via optional control unit
- Output 0-10 V DC + FC enable + setpoint reached
- Pressure setting by means of decade switch

MTP 20 | 128146



- Potentiometer 10 k Ω
- Switching contact 1A/250V AC - 2,5A/12V DC
- Max. ambient temperature 50 °C
- VDE

MTP 30 | 143289



- Stepped potentiometer 10 k Ω
- Step 1 + 2 settable 10 % - 100 % Vdc
- Step 3 100 % Vdc
- Supply voltage +10 Vdc

MTP 40 | 147359



- Potentiometer 10 k Ω
- Connection in terminal box
- Max. ambient temperature 50 °C
- PU: 20 pieces

MTP 50 | 153133



- Potentiometer with multifunction output
- 230 VAC $\pm 10\%$ / 50-60 Hz
- Selectable output: 1-10 VDC / 2-20 mA / 10-100 % PWM
- Min. and max. output value adjustable



zur Produktseite