

KVR 6035 E4 30

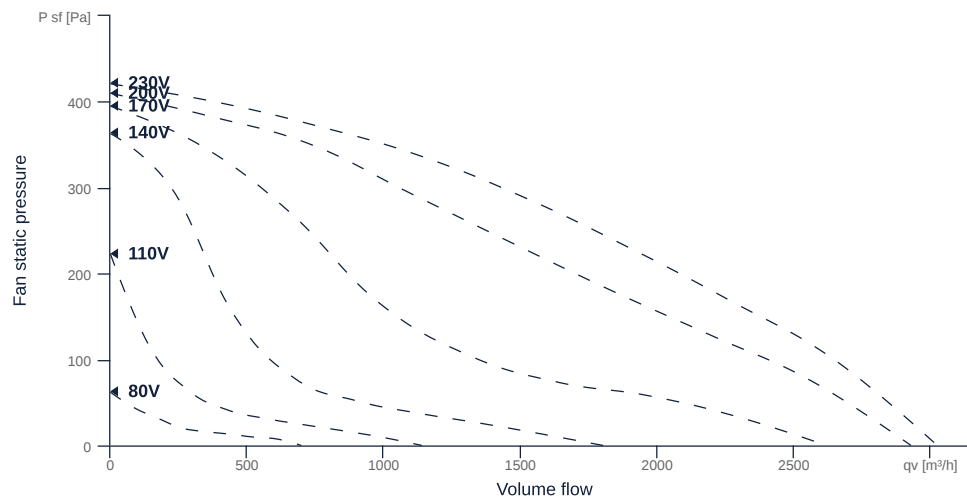
131309

- Backward curved radial impeller
- Removable fan unit
- Housing made of galvanized sheet steel
- Robust single phase AC motor, steplessly controllable
- Conveyed medium temperature up to 40 °C in continuous operation



MAP

Name	Value	Unit
Volume flow	0	m³/h
Pressure	0	Pa



zur Produktseite

KVR 6035 E4 30

131309

ruck

GENERAL DATA

Name	Value	Unit	Formula symbol
ERP conformity	Yes		
Certifications	CE, UKCA		
Duct size	600x350		WxH _{duct}
Pipe connection size (DN)	-		DN
Rated voltage (entire device)	230	V	U _{rated}
Phases (entire device)	1~		phase
Electrical protection (entire device)	6 A		fuse
Housing material	Galvanized steel		mat _{casing}
Impeller material	Plastic		mat _{impeller}
IP-protection class (entire device)	IPX4		IP _{compl}
IP-Protection class (terminal box)	IP44		IP _{ebox}
Weight	24	kg	m
Nominal air flow rate, nominal point m ³ /h	2502	m ³ /h	q _{v,nom}
Nominal external pressure, static	126	Pa	p _{s,nom}
Fan type	Radial		Fan _{type}
Category / Installation situation	A		cat

ERP DATA (LOT 6)

Name	Value	Unit	Formula symbol
Nominal air flow rate, nominal point m ³ /s	0.7	m ³ /s	q _{v,nom}
Actual electrical input power, nominal point	0.24	kW	Pe <sub,nom< sub=""></sub,nom<>
Face velocity, nominal point	3.31	m/s	v _{nom}
Nominal external pressure, static	126	Pa	p _{s,nom}
supply air fan static efficiency, nominal point	45.7	%	η _{es,SUP}
Enclosure sound level, nominal point	69	dB(A)	L _{WA2}
Rating	Product is compliant 2018		

zur Produktseite



KVR 6035 E4 30

131309

ruck

MAXIMAL DATA

Name	Value	Unit	Formula symbol
Max. power consumption (device)	256	W	$P_{ed, max}$
Max. operating current (device)	1.38	A	$I_{ed, max}$
Max. speed	1460	1/min	n_{max}
Max. stat. efficiency	46.5	%	η_{es}
Max. fan efficiency	46.8	%	η_e
Max. flowrate	3020	m ³ /h	q_v, max
Max. stat pressure	420	Pa	$p_{sf, max}$
Max. medium temperature	40	°C	T_m, max
Max. environment temperature	40	°C	$T_{amb, max}$
Min. environment temperature	-25	°C	$T_{amb, min}$
Min. voltage	80	V	U_{min}

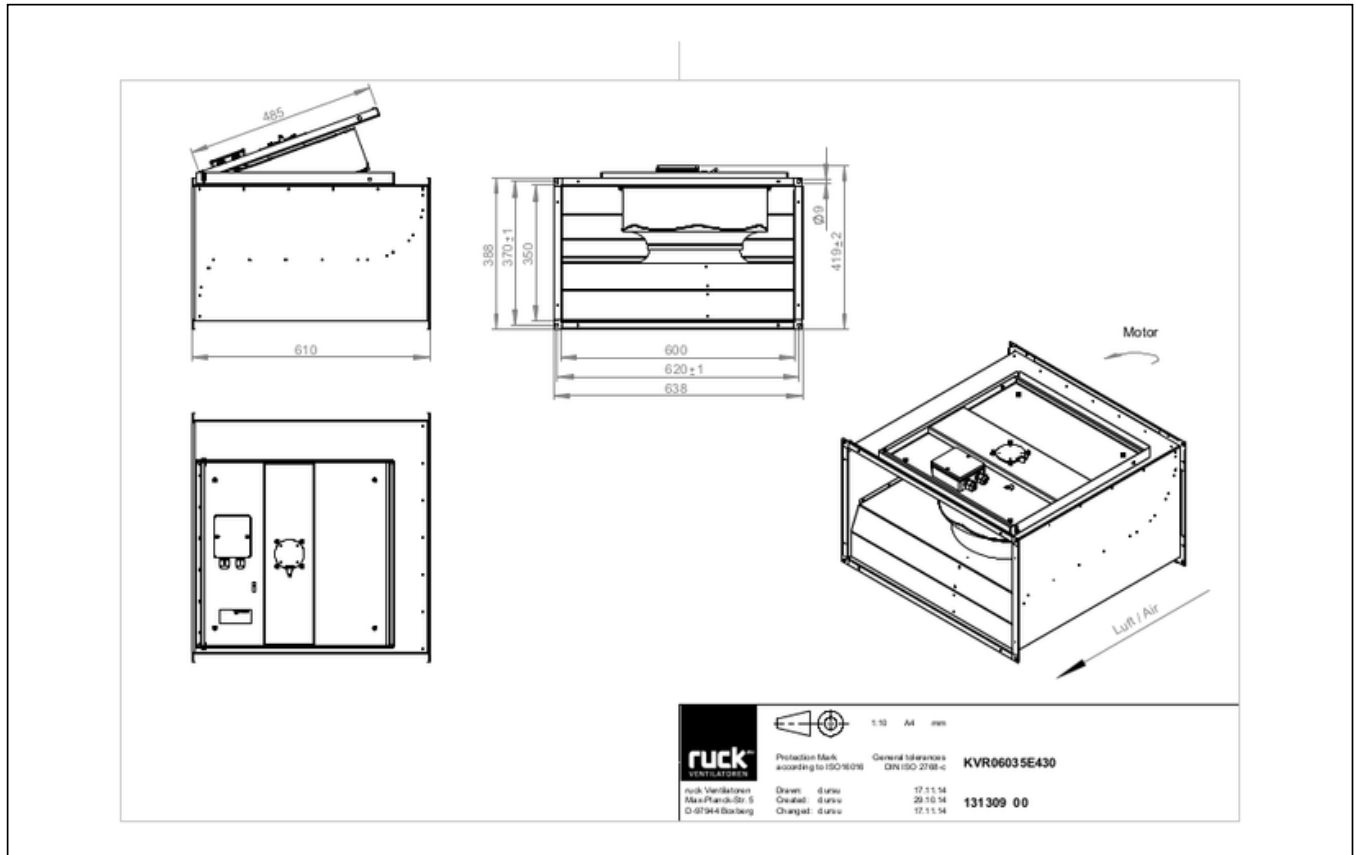


zur Produktseite

KVR 6035 E4 30

131309

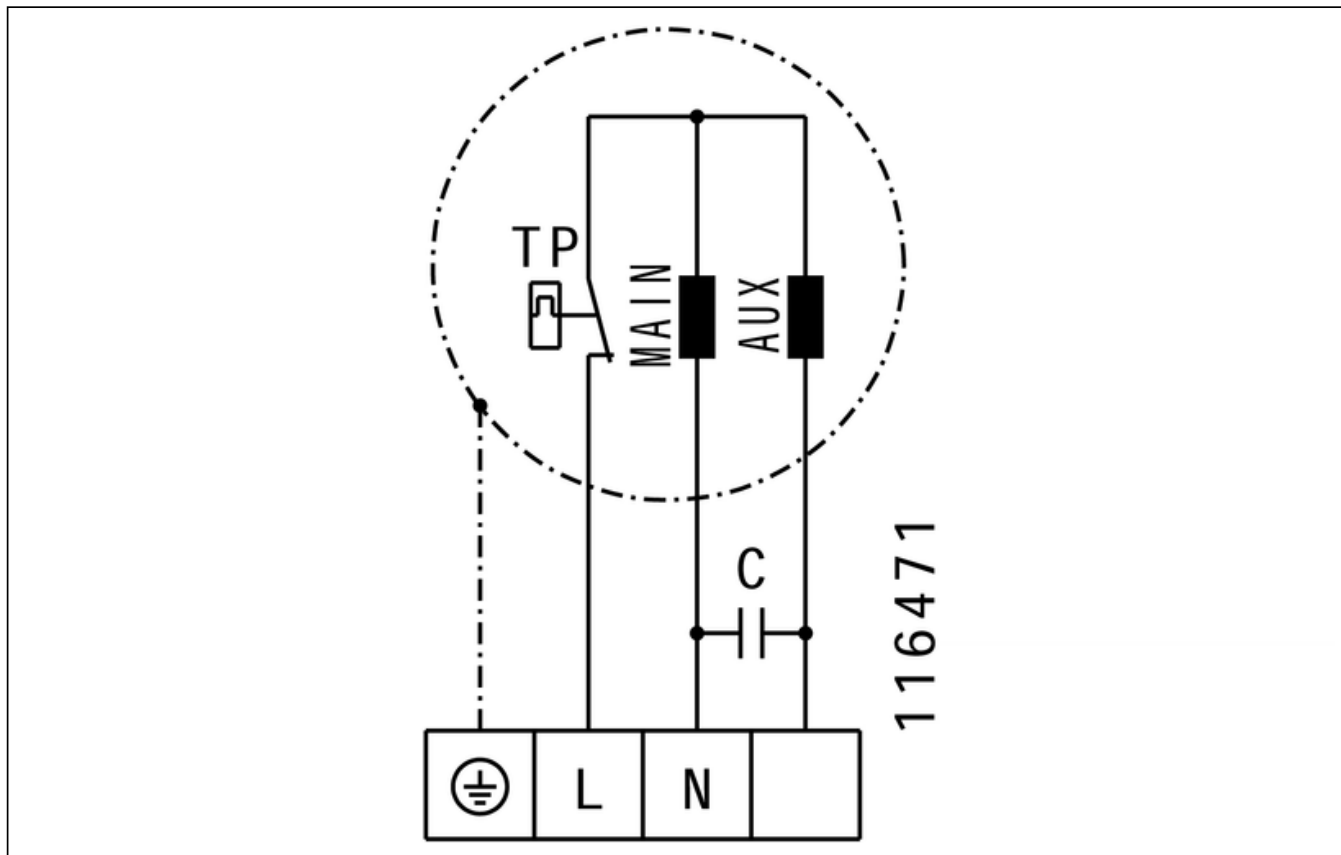
SCHALTPLÄNE / MASSZEICHNUNGEN



zur Produktseite

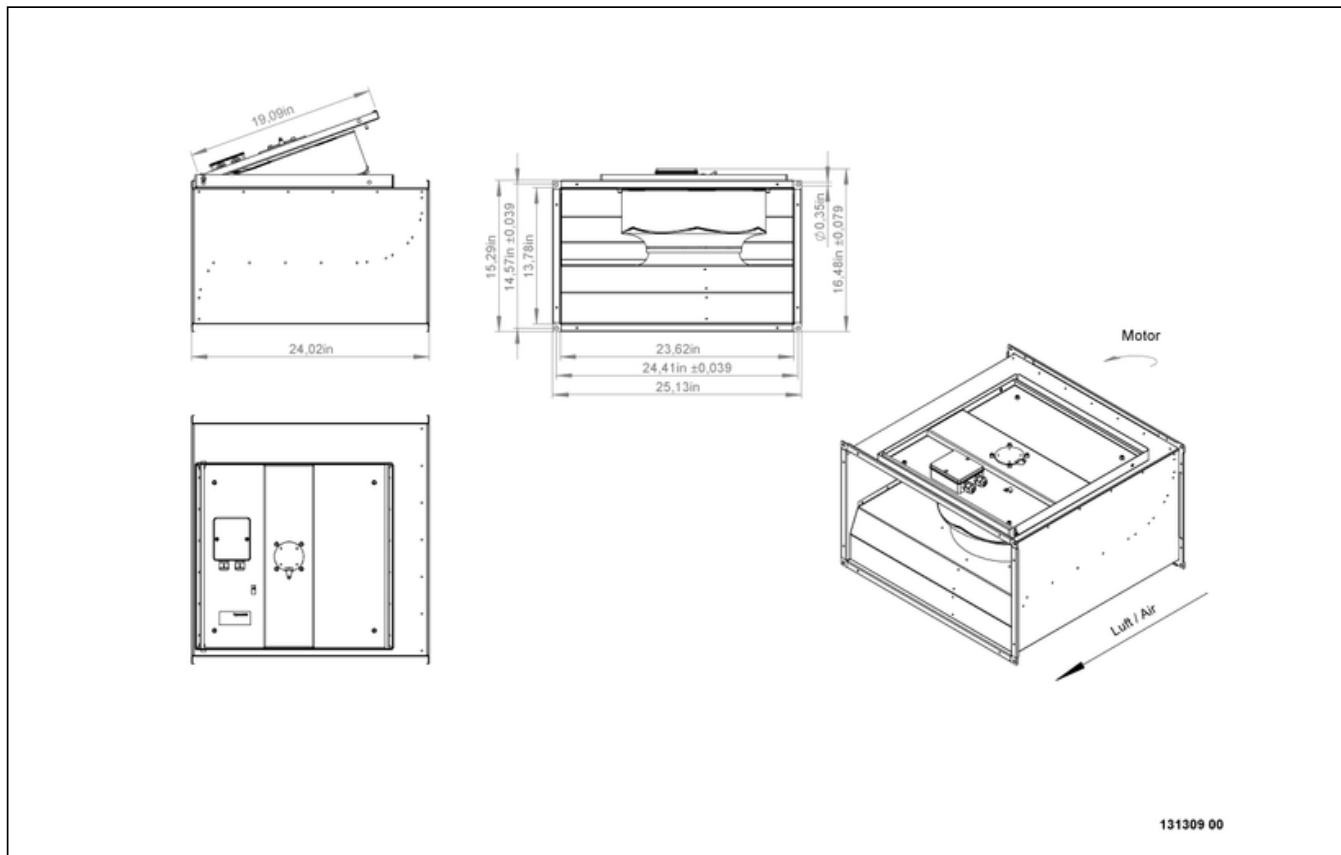
KVR 6035 E4 30

131309



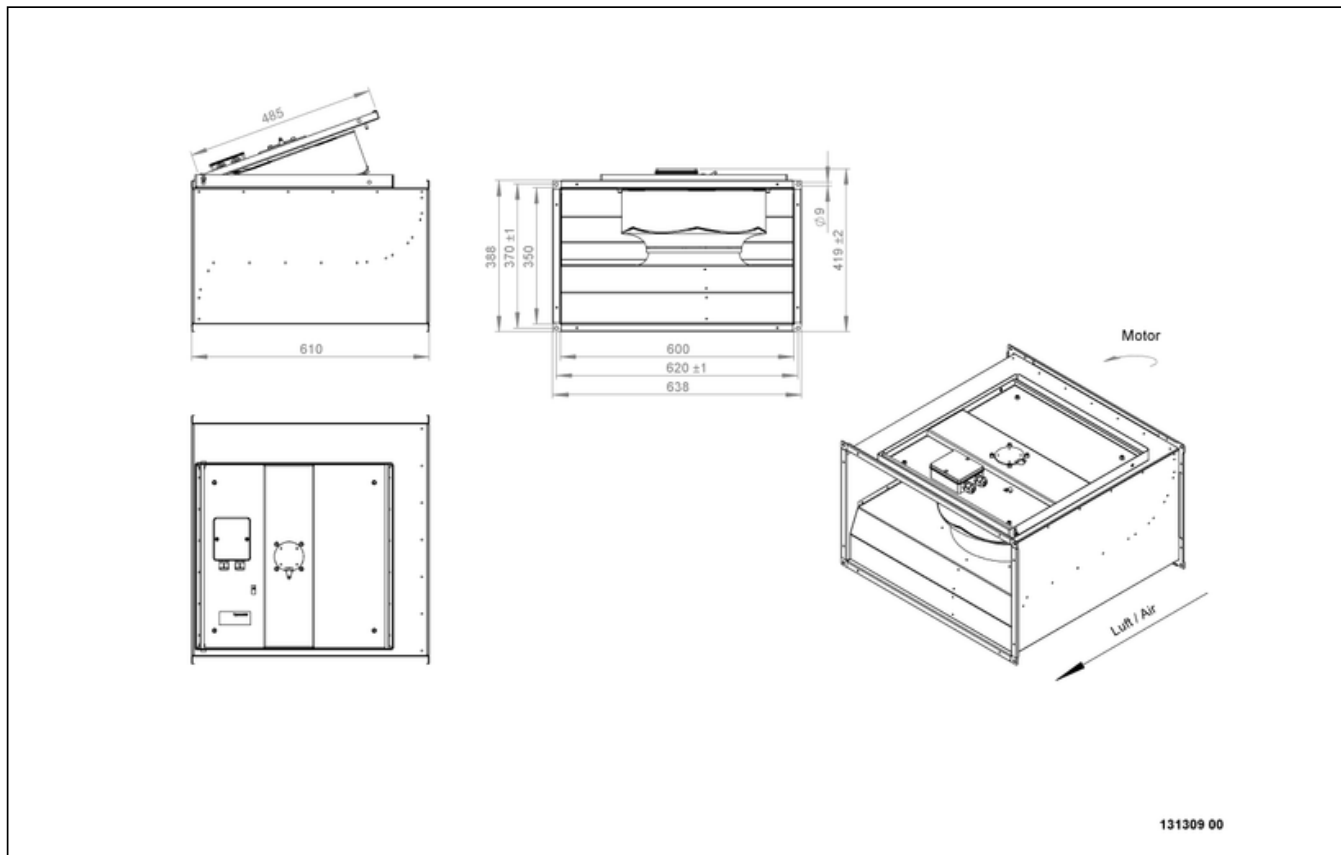
KVR 6035 E4 30

131309



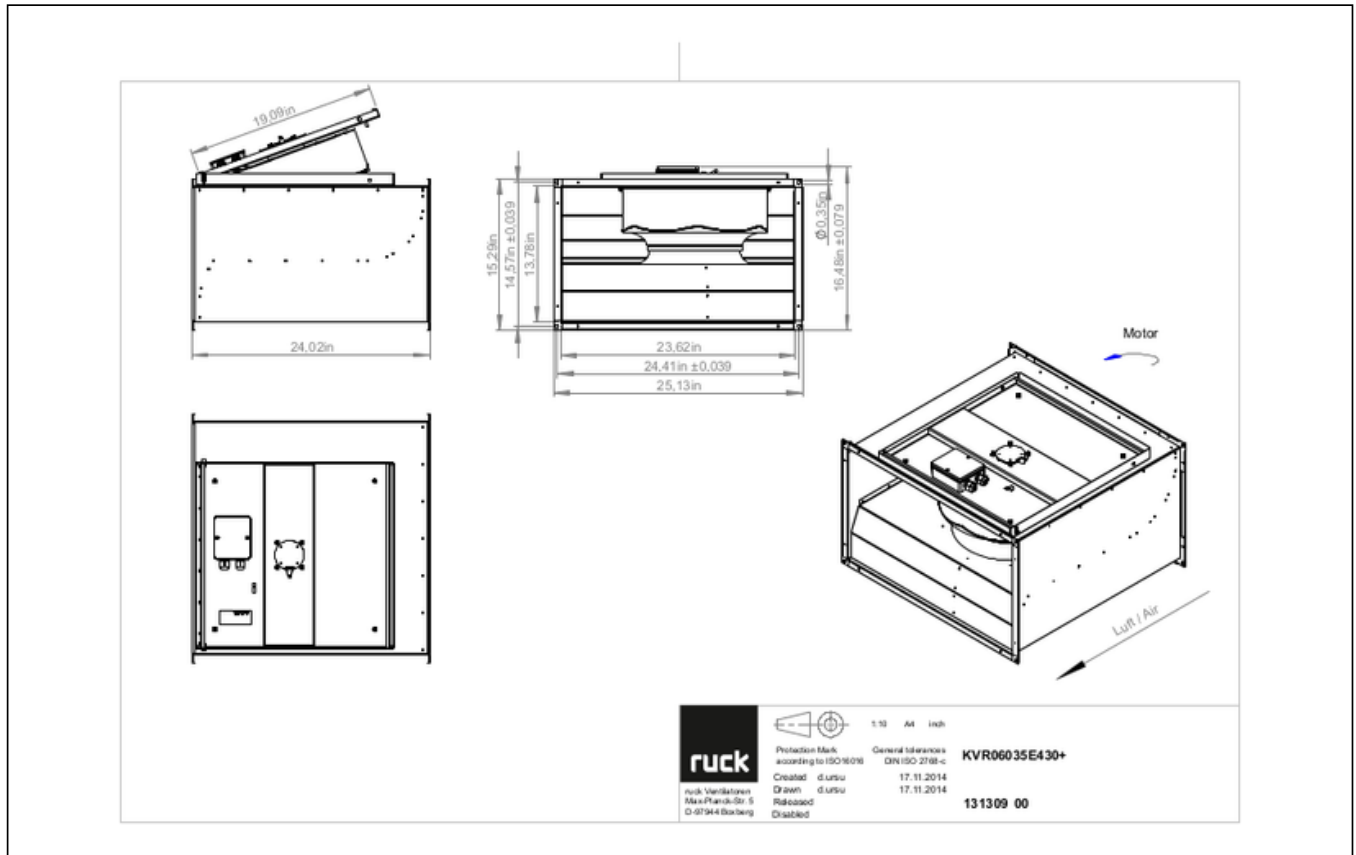
KVR 6035 E4 30

131309



KVR 6035 E4 30

131309



MECHANICAL ACCESSORIES

VS 6035 | 102808



- Duct connector, flexible
- Standard profile flange P20
- Galvanized steel sheet, plastic band (PVC)
- Temperature resistant up to 70 °C

VKK 6035 | 103892



- Automatic shutter
- Plastic, weather resistant
- Temperature resistant up to 70 °C



zur Produktseite

KVR 6035 E4 30

131309

ELECTRICAL ACCESSORIES

GS 01 | 102787



- Isolator switch
- $U_{max} = 400\text{ V}$, 50/60 Hz
- Switching capacity 400 V 3~ = 5,5 kW
- $I_{max} = 16\text{ A}$

MTY 2 | 103424



- Electronic controller
- Stepless
- 230 V ~, 50 Hz
- $I_{max} = 2\text{ A}$

TES 0145 | 111858



- Step transformer
- 230 V ~, 50/60 Hz

TEE 015 | 115893



- 5-step transformer
- 230 V ~, 50/60 Hz



zur Produktseite