

AWV 10



Short description

Outside wall fan, DN 100, alternating current

Application examples

Machine extraction unit, Workplace, Commercial premises, Fitness room, Canteen

Article number 0080.0994

Technical data

Air flow volume	220 m³/h
Rotating speed	2.441 1/min
Speed controllable	✓
Reversing capacity	–
SEC average	-7 kWh/(m²*a)
Type of voltage	Alternating current
Rated voltage	230 V
Frequency	50 Hz
Nominal output	26 W
I _{max}	0,13 A
Degree of protection	IP X4
Insulation class	B
Installation site	Outside wall
Installation position	vertical / horizontal
Material	Sheet steel, galvanised
Housing material	Sheet steel, powder coated
Weight	4,4 kg
Weight including packaging	4,83 kg
Nominal size	100 mm
Width	260 mm
Height	355 mm
Depth	131 mm
Width with packaging	275 mm
Height with packaging	385 mm
Depth with packaging	175 mm
Airstream temperature at I _{Max}	-20 °C up to 30 °C
Packing unit	1 piece
Range	C
GTIN (EAN)	4012799809944

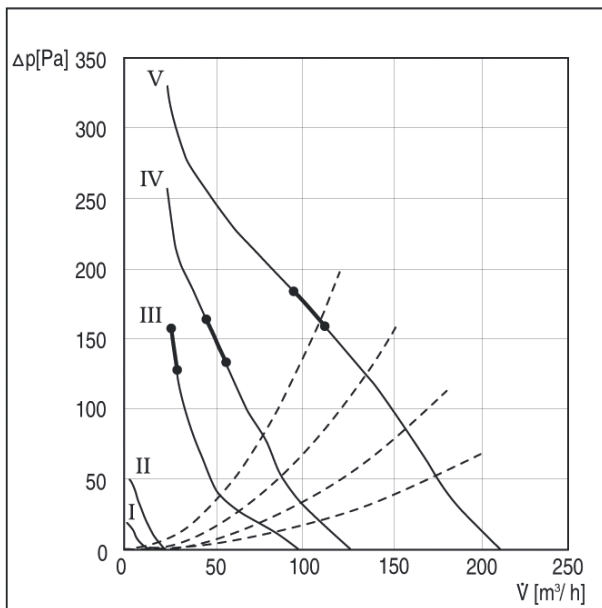
AWV 10

Sound power level in octave range

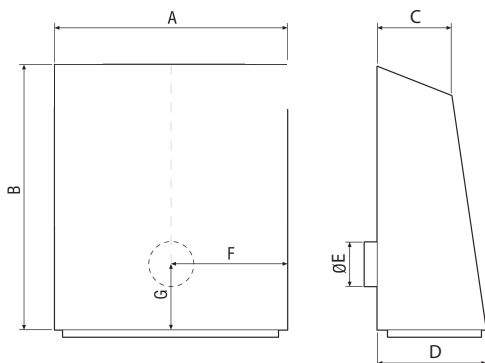
	63 Hz	125 Hz	250 Hz	500 Hz	1 kHz	2 kHz	4 kHz	8 kHz	Total
L_{WA5, S5} (dB(A))	-	-	-	-	-	-	-	-	60

L_{WA5}= free inlet sound power level in dB.

Characteristic curve



Dimensioned drawing [mm]



A	B	C	D	E	F	G
260	355	92	131	98	130	146